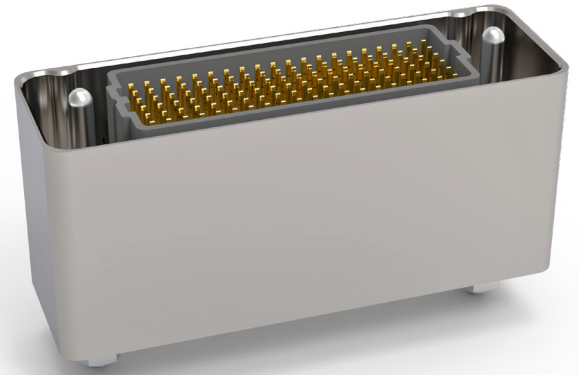




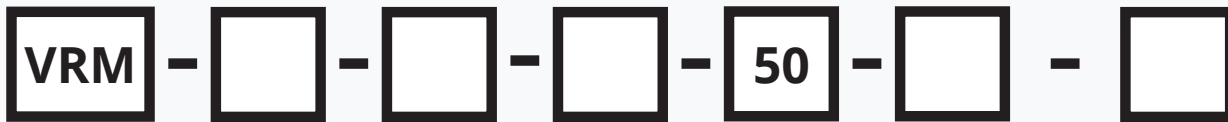
AirBorn verSI Series

VRM — Vertical Rugged Male

VRM signal-integrity connectors are ruggedized versions of the standard VSM male connectors. These connectors can be used in extreme environmental conditions while maintaining high reliability and continuous performance. Pitch: 0.050" (1.27 mm)



Sample Part Number Format: VRM-04-10-120-50-02-G



SERIES

AirBorn
verSI Vertical
Rugged (Male)
1.27 mm

ROWS

04 – 4 Rows
05 – 5 Rows
06 – 6 Rows
08 – 8 Rows
10 – 10 Rows

COLUMNS

10 – 10 Columns
20 – 20 Columns
30 – 30 Columns
40 – 40 Columns
50 – 50 Columns

BOARD SPACING*

080 – 8 mm
100 – 10 mm
120 – 12 mm
160 – 16 mm
200 – 20 mm
250 – 25 mm

CONTACT PLATING

50 – 50 μ" Au

TERMINATION

00 – Press-fit
01 – Paste-in-hole
02 – PTH 0.078"
03 – PTH 0.109"
04 – PTH 0.140"
05 – PTH 0.156"
06 – PTH 0.172"
10¹ – SMT - SN63PB37
Solder Dipped
11¹ – SMT -
42Sn/57.6Bi/0.4Ag
lead free, solder
dipped

OPTIONS

Blank – No options¹
G – Guide pin**¹
G1 – Guide pin**²
J – Turning jackscrew**¹
J1 – Turning jackscrew**²
L – Locking screw**¹
L1 – Locking screw**²
N – Fixed jacknut**¹
N1 – Fixed jacknut**²
E – No Hardware/EMI gasket¹
GE – Guide pin/EMI gasket**¹
G1E – Guide pin/EMI gasket**²
JE – Turning jackscrew/EMI gasket**¹
J1E – Turning jackscrew/EMI
gasket**²
LE – Locking screw/EMI gasket**¹
L1E – Locking screw/EMI gasket**²
NE – Fixed jacknut/EMI gasket**¹
N1E – Fixed jacknut/EMI gasket**²

NOTES:

See Molex SPEC ESL5001 for installation information.
Connector potting is standard.

* Consult factory for additional board spacing options.

** Not available with 8 mm board spacing

¹ Used for PC board thickness up to 0.125"

² Used for PC board thickness 0.125" up to 0.250"

¹ Surface Mount Termination only available on 4 Row vertical connectors.

¹ No hardware supplied with blank hardware option connectors.

Molex can manufacture other configurations to your exact specifications.

RoHS Compliant (except for termination option 10); certificate of conformance available upon request with each shipment

Please view document VRM-XX-XX-XXX-XX-XX-XX on molex.com before part configuration for more product specification information.



Board Spacing		Mated Height (in)
Code	Value	Nominal
080	8mm	0.315 (.350 Max)
100	10mm	0.394 (.429 Max)
120	12mm	0.472 (.507 Max)
160	16mm	0.630 (.665 Max)
200	20mm	0.787 (.822 Max)
250	25mm	0.984 (1.02 Max)

NOTE: Please consult molex.com to configure your part number and for the latest revision controlled drawing and technical data.

Reliable Contact Every Time

AirBorn verSI Series connectors feature a low-mating-force, high-reliability contact system with four points-of-contact. The open-pin field design allows for flexibility in termination schemes. Single-ended, differential pair, power and ground are all available in one connector design.

