

PLUG	RECEPTACLE					
SERIES		PLUG:	PA	10	S	JTB
SIZE		RECEPTACLE:	PA	10	P	J
CONTACTS			XX	XX	X	XXX
HARDWARE						
OPTIONS						

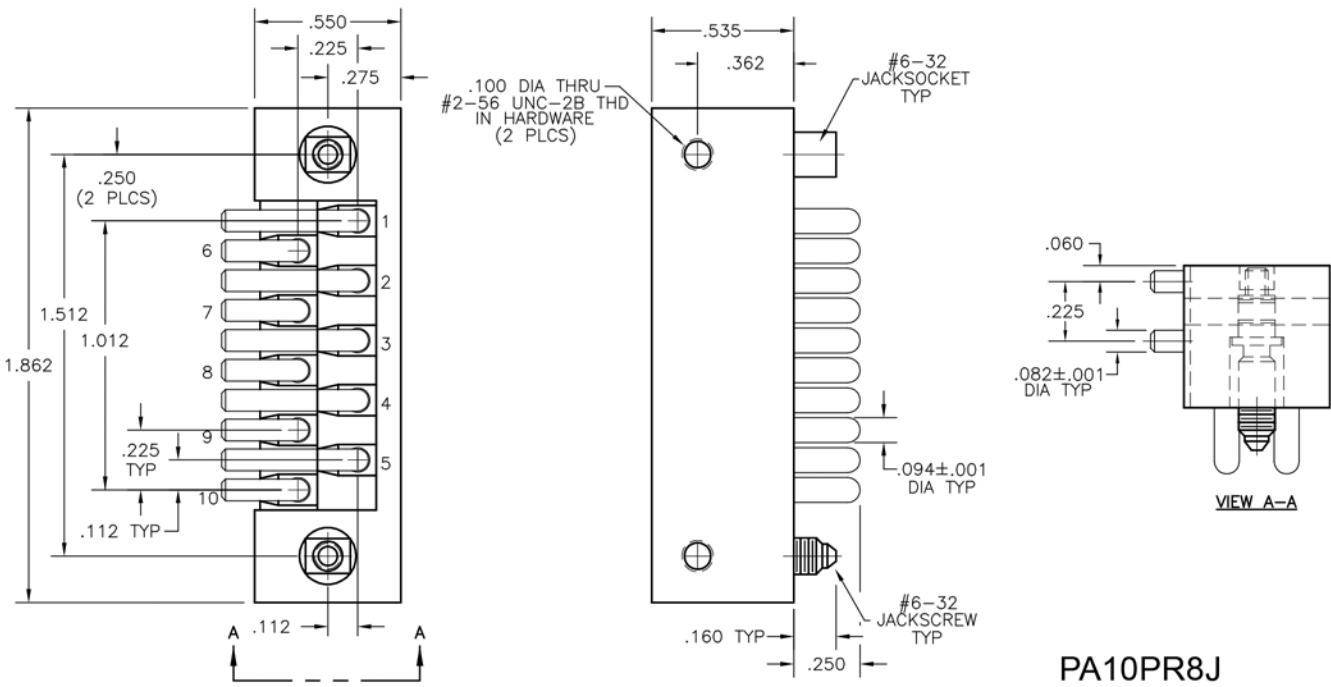
TYPE CONTACTS/TERMINATIONS: P Pin, straight, solder cup PD11 Pin, straight, dip solder, .172" x .062" dia PR7 Pin, right angle, dip solder, .109" x .082" dia PR8 Pin, right angle, dip solder, .125" x .082" dia	TYPE CONTACTS/TERMINATIONS: S Socket, straight, solder cup SD11 Socket, straight, dip solder, .172" x .062"
--	--

SY Guide set J Fixed jackset JT Turning jackset, 1.054" (straight plug only) JTB Hex turning jackset, .314" (straight plug only) JTL Long turning jackset, 1.175"	SY Guide set J Fixed jackset JT Turning jackset, 1.054" JTB Hex turning jackset, .314" JTL Long turning jackset, 1.175"
---	---

- Option Codes: Add to the end of the part number. Example: PA10PD11SY-P39. Call factory for additional codes.
- D01 Pretinned contact terminations (except solder cups, wire wraps® and flex contacts) with 63/37 or 60/40 solder. ☒
- P39 Pretinned contact terminations (except solder cups, wire wraps® and flex contacts) with SAC305 solder (lead free).

☒ = Option not RoHS compliant

NOTES:
 Molded bodies: Polyphenylene sulfide
 Contact rating: #12 contacts = 23 amps
 Contact material: Socket - Beryllium copper, gold plated
 Pin - Brass gold plated
 Contact plating: Nominal Au plating thickness is 20 microinches on mating surfaces
 Test voltage: 2000 VRMS @ sea level; 460 VRMS @ 70,000 feet
 Contact resistance: .023 volt maximum drop @ 23 amps (.001 ohm)
 Engagement force: 24 ounces maximum average per contact



PA10PR8J