

Cable Assembly Guide

Connector Types: Integrated Shield Termination Platform



Break-Away Plug



In-Line Receptacle



Threaded Plug



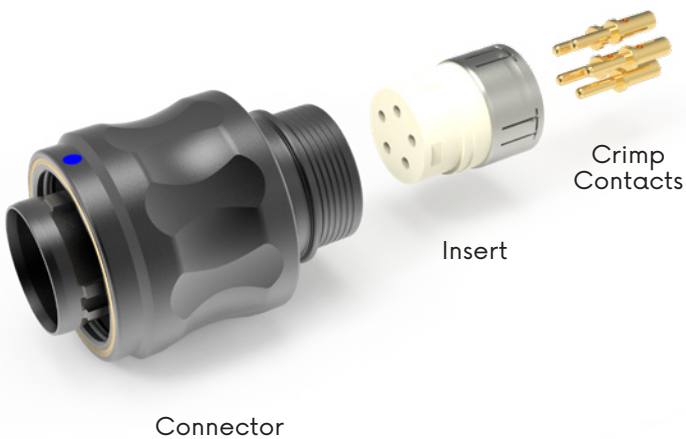
Panel-Mount Receptacle



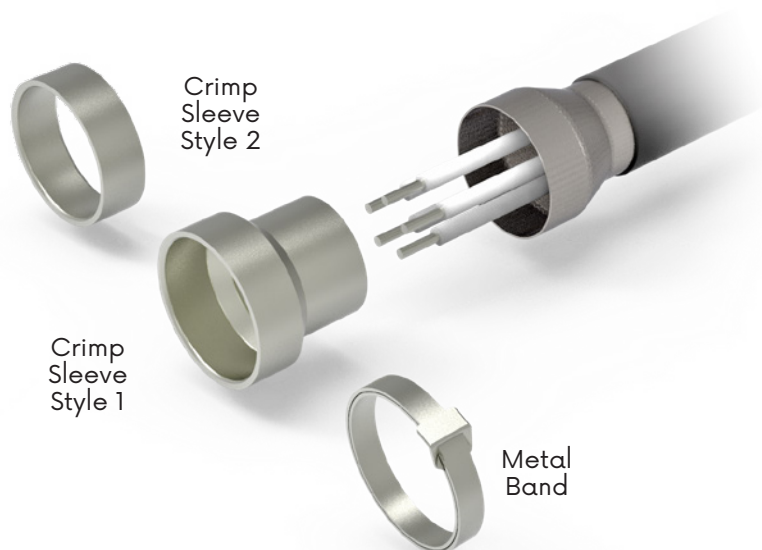
Push-Pull Plug

Assembly

Delivery Condition



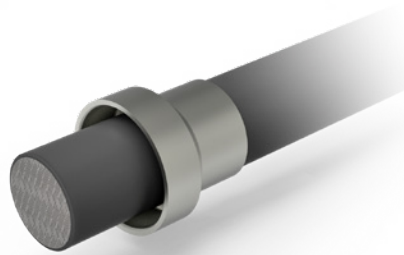
Order Separately



Assembly Instructions

Step 1

Slide crimp sleeve over the cable. The crimp sleeve is not needed if a metal band is used for fastening the shield to the crimp area. Crimp sleeves are ordered separately.



Step 2

Strip cable and conductors. Fold back the shield and use fastening tape to fasten it temporarily to the cable jacket.



Step 3

Crimp the contacts to the wires.



Step 4

Press the terminated contacts into the contact cavities according to the application-specific pinout instructions. Use the insertion tools if needed.



Assembly Instructions Continued

Step 5

Align the exterior key of the insert with the interior keyway of the connector. Press the insert assembly into the connector housing. If inserted correctly, there should be an audible "click."



Step 6

Remove the fastening tape and lay the shield braid on to the shield termination platform.



Step 7

Fasten the shield braid to the crimp area by means of crimping or by using a metal band.

Optional: For additional sealing or to prepare for overmolding, the interior of the crimp sleeve may need to be potted.



Step 8

Bend relief: This can be implemented by means of overmolding or by using shrink boot.



TCAG-1.24

