



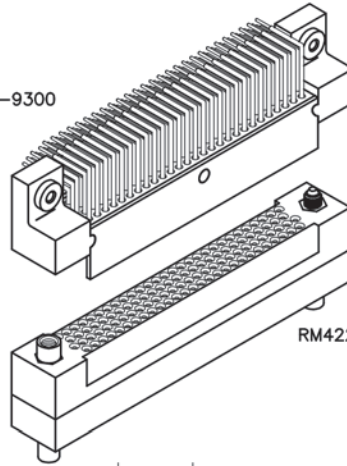
4 · ROW Cable or Board to Crimp Removable

.075"

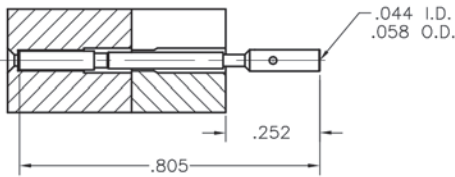
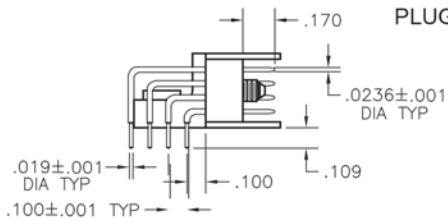
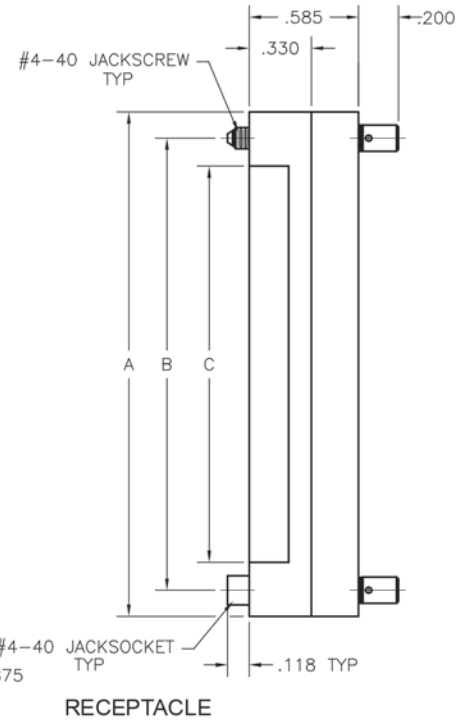
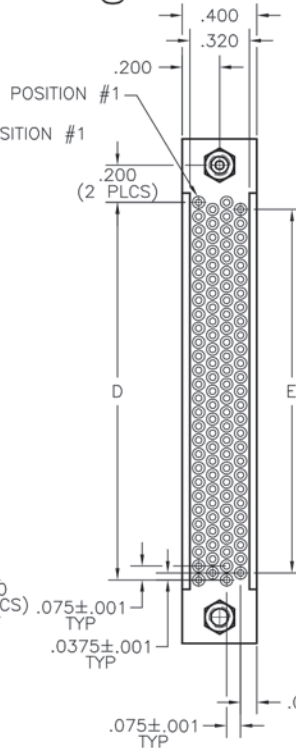
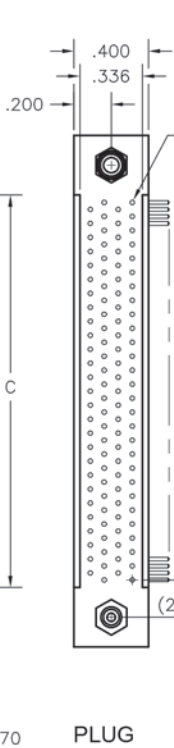
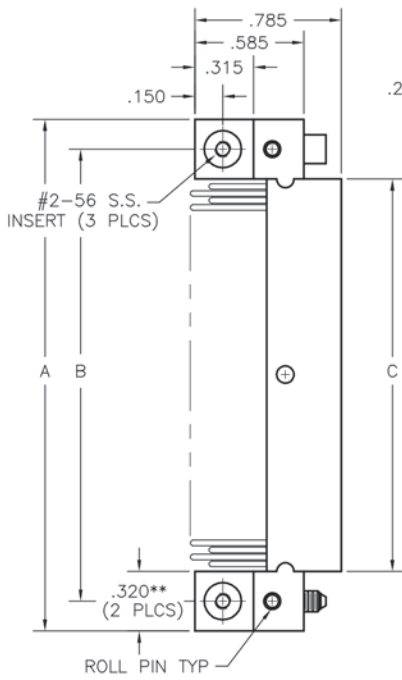
RM4

86 & 110 Contacts

RM452-110-312-9300

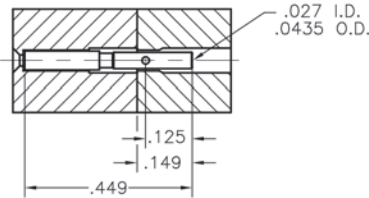


RM422-110-581-9200

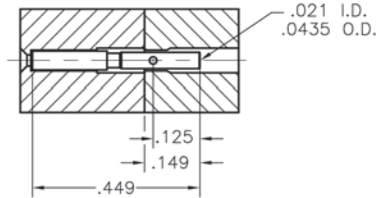


20-22 AWG

CRIMP REMOVABLE CONTACTS	
SIZE	PART NUMBER
20-22 AWG	RM400-000-571-0000
24-26 AWG	RM400-000-581-0000
28-30 AWG	RM400-000-591-0000



24-26 AWG



28-30 AWG

NOTES:

* = Single section, no center mounting hole.

** = .280" for 86 position

When using crimp contacts with 20 gage barrel, barrel must be cut off prior to removing contact from connector body.

SIZE	A	B	C		D	E
			PLUG	RCPT		
86*	2.255	1.975	1.655	1.675	1.575	1.500
110*	2.745	2.425	2.105	2.125	2.025	1.950