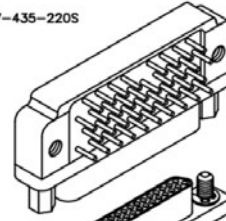


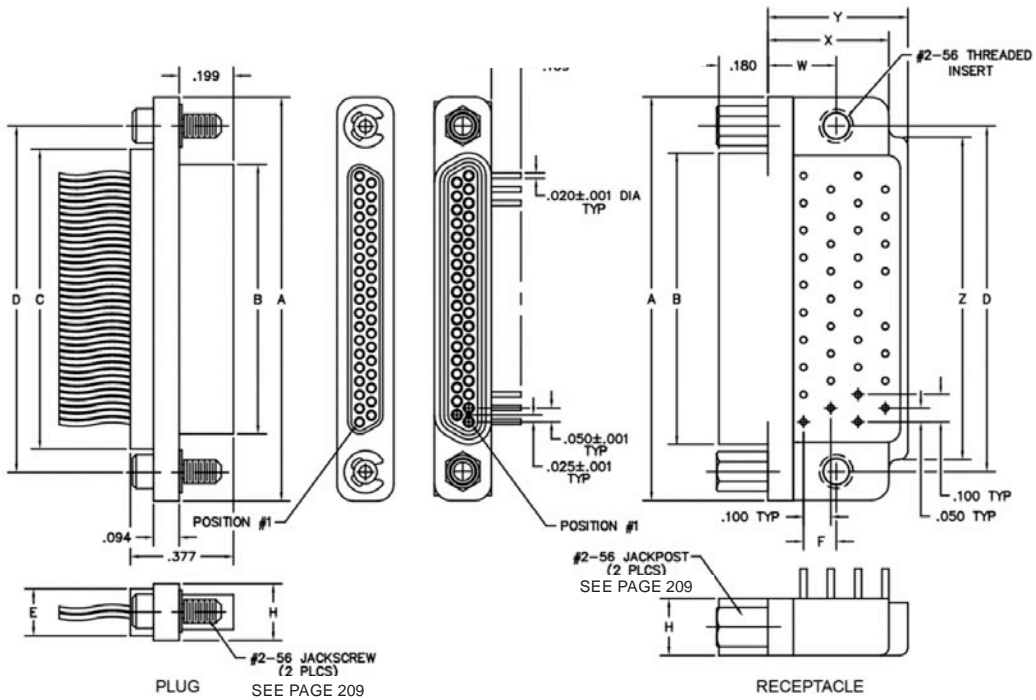
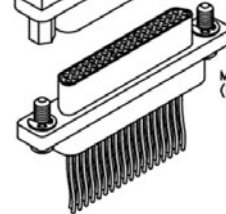
BOARD-TO-CABLE (NARROW FOOTPRINT)

MSHT - LOW-PROFILE BOARD MOUNT HIGH TEMPERATURE &
 MQHT - LOW-PROFILE CABLE HIGH TEMPERATURE
 0.050" | 9 THROUGH 100 CONTACTS

MSHT-262-037-435-220S
 (METAL)



MQHT-212-037-161-41WS
 (METAL)



DIMENSIONS

Size	Contact Row	A	B		C	D	E	F	H	W	X MAX	X MAX	Z	Hardware
			Plug MAX	RCPT MAX										
9	2	0.778	0.292	0.378	0.398	0.565	0.173	0.020	0.208	0.250	0.420	0.420	0.775	#2-56 UNC THD
15		0.928	0.442	0.528	0.548	0.715								
21		1.078	0.592	0.678	0.698	0.865								
25		1.178	0.692	0.778	0.798	0.965								
31		1.328	0.842	0.928	0.948	1.115								
37		1.478	0.992	1.078	1.098	1.265								
51	3	1.428	0.942	1.028	1.048	1.215	0.220	0.150	0.250	0.300	0.425	0.650	1.220	