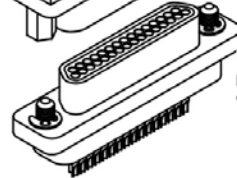
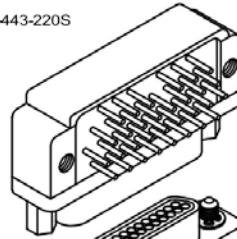


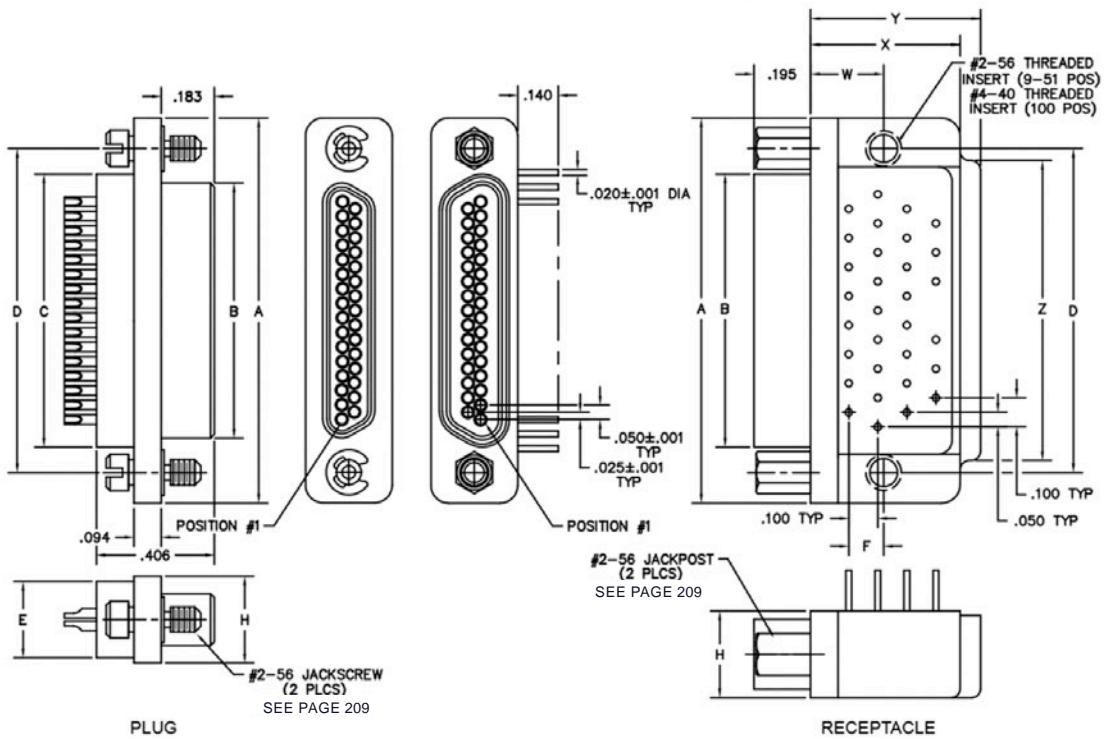
# BOARD- (NARROW FOOTPRINT) TO-CABLE

**MKHT – RUGGED BOARD MOUNT HIGH TEMPERATURE & MMHT – RUGGED CABLE HIGH TEMPERATURE**  
 0.050" | 9 THROUGH 100 CONTACTS

MKHT-262-031-443-220S  
 (METAL)



MMHT-212-031-113-4300  
 (METAL)



## DIMENSIONS

Size	Contact Row	A	B		C	D	E		F	H	W	X MAX	X MAX	Z	Hardware
			Plug MAX	RCPT MAX			Potting Well MAX								
9	2	0.775	0.334	0.400	0.390	0.565	0.270	0.020	0.120	0.298	0.250	0.420	0.420	0.775	#2-56 UNC THD
15		0.925	0.484	0.550	0.540	0.715								0.925	
21		1.075	0.634	0.700	0.690	0.865								1.075	
25		1.175	0.734	0.800	0.790	0.965								1.175	
31		1.325	0.884	0.950	0.940	1.115								1.080	
37		1.475	1.034	1.100	1.090	1.265								1.180	
51	3	1.425	0.984	1.050	1.040	1.215	0.310	0.150	0.341	0.300	0.430	0.650	1.220	#4-40 UNC THD	
100	4	2.160	1.384	1.508	1.432	1.800	0.360	0.200	0.384	0.400	0.590	1.000	1.810		