

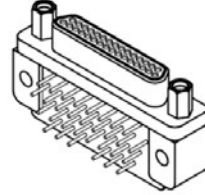
RIGHT-ANGLE BOARDMOUNT (NARROW FOOTPRINT)

MK & ML

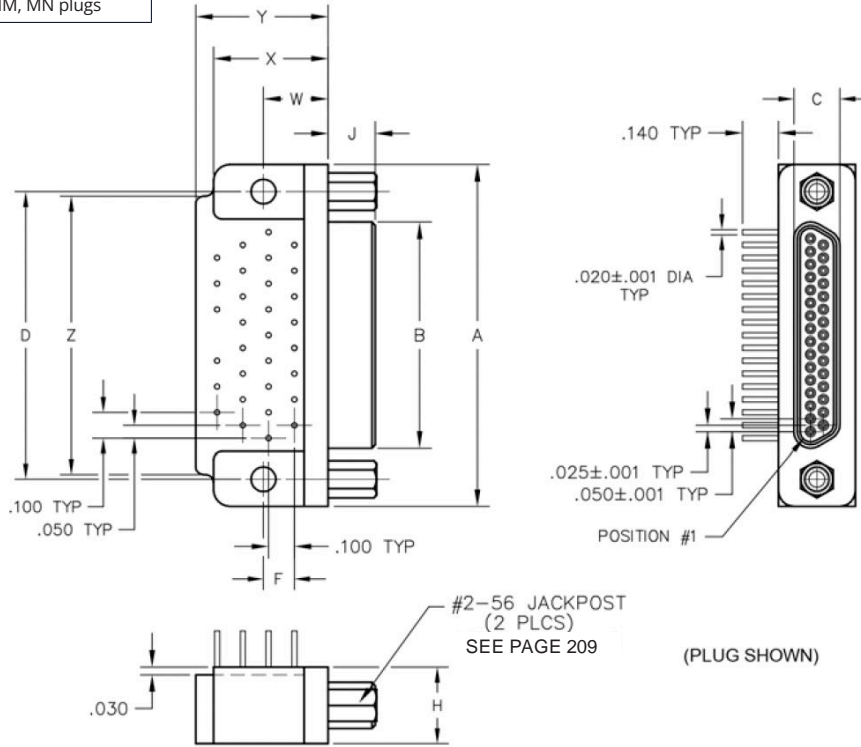
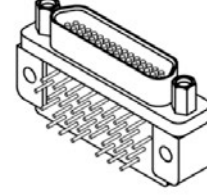
0.050" | 9 THROUGH 100 CONTACTS

MATING MATRIX	
Connector	Mates With
MK-25...	MK, ML, MM, MN receptacles
ML-25...	MK, ML, MM, MN receptacles
ML-26..	MK, ML, MM, MN plugs
ML-26..	MK, ML, MM, MN plugs

MK-252-031-335-220S
(PLUG)



MK-262-031-445-220S
(RCPT)



DIMENSIONS																	
Size	Contact Row	A	B		C		D	F	H	J		W	X MAX	Y MAX	Z	Hardware	Mounting Holes
			Plug MAX	RCPT MAX	Plug MAX	RCPT MAX				Plug	RCPT						
9	2	0.775	0.334	0.400	0.185	0.251	0.565	0.565	0.298	0.183	0.195	0.250	0.420	0.420	0.775	#2-56 UNC THD	0.096 DIA or #2-56 UNC Threaded Insert
15		0.925	0.484	0.550			0.715								0.925		
21		1.075	0.634	0.700			0.865								1.075		
25		1.175	0.734	0.800			0.965								1.175		
31		1.325	0.884	0.950			1.115								1.080		
37		1.475	1.034	1.100			1.265								1.180		
51	3	1.425	0.984	1.050	0.228	0.341	1.215	0.150	0.341	0.183	0.195	0.300	0.430	0.650	1.220	#2-56 UNC THD	0.096 DIA or #2-56 UNC Threaded Insert
69		1.725	1.284	1.350			1.515							0.755	1.450		
100	4	2.160	1.384	1.508	0.271	0.384	1.800	0.384	1.800	0.183	0.195	0.400	0.590	1.000	1.810	#4-40 UNC THD	0.125 DIA #2-56 UNC Insert #4-40 UNC Insert

