



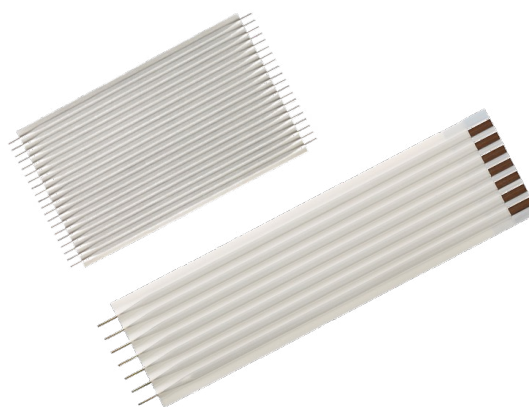
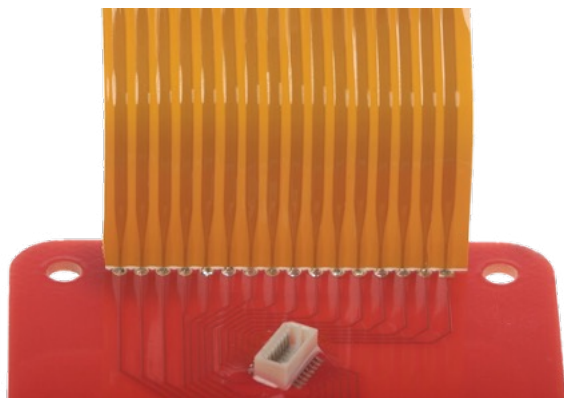
## PREMO-FLEX ROUND FLAT CABLE (RFC) SOLUTIONS >

### PRODUCT OVERVIEW

Enabling the use of flexible cable jumpers in compact applications requiring robust connections, Premo-Flex RFC Jumpers and RFC Hybrid Jumpers deliver high mechanical strength, reduce costs by eliminating connectors and wire stripping, and improve design flexibility.

### SOLVING INDUSTRY CHALLENGES

INDUSTRY CHALLENGE	PRODUCT SOLUTION
<b>RELIABLE CONNECTIONS FOR HARSH ENVIRONMENTS</b> Designers need consistent connectivity in applications subject to high vibration, high shock and dynamic forces.	Premo-Flex RFC Jumpers and RFC Hybrid Jumpers deliver secure and highly consistent connectivity, to help prevent mechanical disconnection by utilizing wave soldering that enable through-hole attachment to the PCB.
<b>REDUCING MATERIAL COSTS</b> Manufacturers are looking for ways to reduce material costs, streamline inventory requirements and procurement, and simplify assembly operations.	By using Premo-Flex RFC Jumpers, manufacturers can eliminate the cable-to-board connector and the need for wire stripping. This saves on material costs, simplifies the bill of materials (BOM), reduces inventory and procurement requirements, and speeds assembly operations.

**molex**



## PREMO-FLEX

## ROUND FLAT CABLE (RFC) SOLUTIONS &gt;

## FEATURES AND ADVANTAGES

**DELIVERS A ROBUST AND RELIABLE CONNECTION TO THE BOARD**

The round flat cable design uses a wave-soldered through-hole connection to the board, offering superior signal integrity and high resistance to vibration and bending forces.

**ENHANCES DESIGN FLEXIBILITY FOR WIRE-TO-BOARD APPLICATIONS**

Cable options include straight RFC round-to-round connections or RFC Hybrid round-to-flat designs, with zero insertion force (ZIF) and low insertion force (LIF) Easy-On PCB connectors available for RFC Hybrid solutions.

**REDUCES ASSEMBLY AND MATERIAL COSTS**

The directly soldered attachment method eliminates the need for connectors or wire stripping, simplifying assembly operations.

**ENABLES USE IN HIGH-TEMPERATURE ENVIRONMENTS**

Standard products are rated up to +105°C. Custom solutions are available up to +125°C (with polyimide or aramid tape).

## APPLICATION SPOTLIGHT

**PROVIDING COMPACT, HIGH-STRENGTH ELECTRICAL CONNECTIVITY BETWEEN THE FLEXIBLE JUMPER AND THE BOARD**

Automotive, consumer and mobile device applications require excellent electrical performance; miniaturized package sizes; and robust, highly reliable connections capable of withstanding mechanical stress and vibration. Premo-Flex RFC Jumpers and RFC Hybrid Jumpers deliver consistent electrical performance and conserve space in compact applications by eliminating the cable-to-board connector.

- |                         |                         |                              |             |
|-------------------------|-------------------------|------------------------------|-------------|
| Cameras                 | Phones                  | Vehicle infotainment systems | Notebooks   |
| Handheld gaming devices | Automotive LCD displays | Virtual cockpits             | Televisions |

## ORDERING INFORMATION

Series	15061 (Hybrid and Standard)
Pitch (mm)	1.00
Max. Current (A) per Contact	1.0 (at 20°C)
Operating Voltage	60V AC
Board Attachment	Through-hole solder; RFC Hybrid only: Easy-On connector in series 52207, 52271, 52610, 52808, 52793, 52852, 52806, 52807
Plating	Tin
Circuits	2 to 50
Pin Wire Size	28 AWG (0.32mm)
Jumper Length	25 to 305mm
Operating Temperatures	-40 to +105°C (For higher-temperature solutions up to +125°C, contact Molex for custom options.)

[www.molex.com](http://www.molex.com)
**molex**