

# Leak Detection Cable Assemblies >

A customizable solution used in server applications, Molex Leak Detection Cable Assemblies deliver flexible, high-reliability monitoring for early leak detection in liquid-cooled data center environments. Designed for space-constrained server trays, these assemblies integrate seamlessly with Molex connectors and monitoring systems to safeguard uptime and protect critical infrastructure.



## ADVANTAGES AND FEATURES

### Saves cost and time

Liquid-detection capabilities enable early leak detection before any damage occurs within the server rack.

### Resists abrasion, contamination and false alarms

These cable assemblies are designed for durability even in high humidity or dust environments that can cause equipment failure.

### Provides a total solution for all elements required

Connector options, leak cable and monitor cable are part of the complete solution.

Voltage Rating (max.)	50V
Number of Circuits	Custom circuits

### Optimizes space

With a small wire diameter and form factor, these cables offer an exceptional solution for space-constrained applications that utilize connectors with small housing dimensions—Micro-Lock Plus and Nano-Fit Connectors.

### Offers design flexibility

These cable assemblies are customizable to overcome configuration limitations and facilitate easy modifications, reducing time delays.

## MARKETS AND APPLICATIONS

### Data center

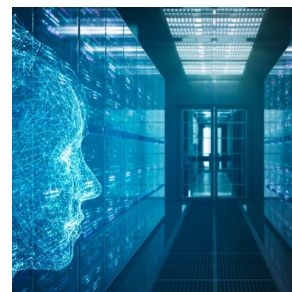
Liquid-cooled server racks

### Servers and Storage

AI racks (multiple trays)



Liquid-Cooled Server Racks



AI Racks



# Leak Detection Cable Assemblies >

## SPECIFICATIONS

### Reference Information

Packaging: Embossed tape with cover

Designed in: Millimeters

### Electrical

Voltage (max.): 50V

Number of Circuits: Custom circuits

Note: The discrete wire version is 28 AWG and UL 10368. The cable assemblies incorporate small connectors such as Micro-Lock Plus, Micro-Fit or Nano-Fit Connectors to provide a solution. Contact Molex for product specification information as these products are a customizable solution.