

ChargeStack Connectors >

Meeting the demands of today's compact, high-performance devices requires connectors that deliver both power and reliability in minimal space. With the ability to handle up to 20.0A in a super-slim, compact design, board-to-board ChargeStack Connectors integrate power and signal contacts within a single footprint to maximize PCB space efficiency.

ADVANTAGES AND FEATURES

Offers increased space savings on the PCB

The miniaturized board-to-board design of the connectors reduces the connector height and size, saving valuable space on the PCB. This enables thinner assemblies and allows more semiconductors and chips to be mounted on the PCB.

Supports fast charging requirements

The connectors support 10.0 and 20.0A separately through dedicated terminals, which minimizes temperature rise and reduces power loss, thereby ensuring optimal electrical performance.

Helps reduce the failure rate caused by broken and damaged housings

The connectors feature full metal armor and a fully overmolded structure that protects the housing and enhances mechanical robustness.

Current	0.3A (per pin); 10.0 to 20.0A (power pin and nail)
Number of Circuits	6 (signal) and 4 (power)
Mates With	228351 (plug)/228350 (receptacle) 229326 (plug)/229325 (receptacle) 216657 (plug)/216656 (receptacle) 220251 (plug)/220250 (receptacle)
Insulation Resistance	100 Megohms
Height	0.52mm (10.0/20.0A)/0.70mm (15.0/18.0A)
Operating Temperatures	-40 to +80°C

Provides stable and proper mating conditions

The connectors' dual-contact design and sufficient wiping length increase tolerance to harsh environmental stresses and maintain reliable electrical contact by effectively cleaning the contact surfaces.

Improves efficiency and device safety

The high-power delivery of the connectors with low LLCR reduces heat generation and power loss, ensuring efficient energy transfer and prolonging connector lifespan.

Mating Height - 0.52mm

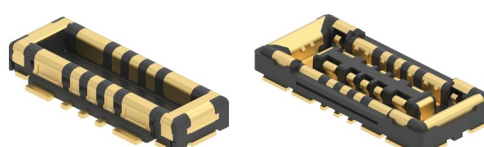


ChargeStack 5.0 to 10.0A



ChargeStack 5.0 to 20.0A

Mating Height - 0.70mm



ChargeStack 7.0 to 15.0A



ChargeStack 7.0 to 18.0A

ChargeStack Connectors >

MARKETS AND APPLICATIONS

Medtech

Patient-monitoring devices
Surgical tools and systems
Therapeutic devices

Mobile devices

Laptops
PCs
Smart phones
Tablets

Networking

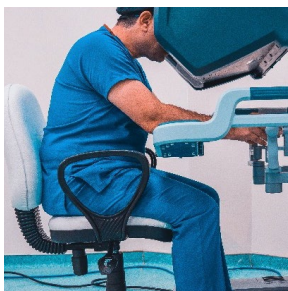
Gateways
Hubs
Modems
Routers

Telecommunications

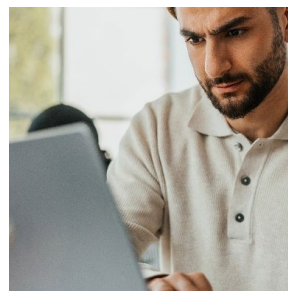
Bluetooth devices
GPS devices
Television signals
Wireless devices

Wearables

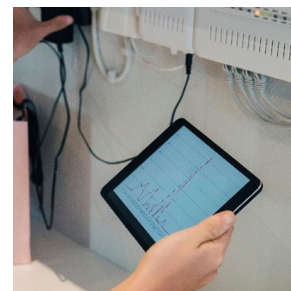
AR/VR glasses
Earbuds
Smart watches



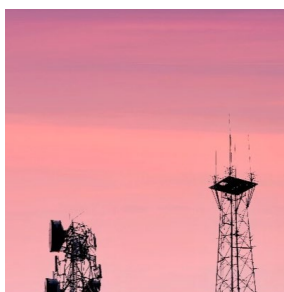
Surgical Tools and Systems



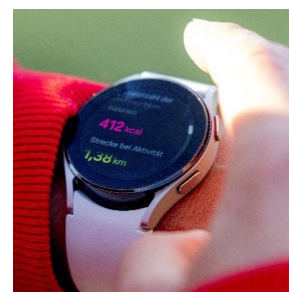
Laptops



Modems



Television Signals



Smart Watches

SPECIFICATIONS

Reference Information

Packaging: Embossed tape on reel
Designed In: Millimeters
RoHS: Yes
Halogen Free: Low halogen

Electrical

Voltage (max.): 50V
Current (max.):
Series 228350/22835—
Signal contact: 0.3A per circuit
Power contact and nail: 10.0ASeries
229325/229326—
Signal contact: 0.3A per circuit
Power contact and nail: 20.0A
Contact Resistance (max.) —
Signal Contact: 30 milliohms
Power Contact: 5 milliohms
Insulation Resistance (min): 100 Megohms
Dielectric Withstanding Voltage: 250V AC

Mechanical

Insertion Force (max.):
Initial: 40N
After 30th cycle: 40N
Withdrawal Force (min.):
Initial: 8N
After 30th cycle: 4N

Physical

Housing: LCP, UL 94V-0, black
Contact: Copper alloy
Plating:
Contact area—gold
Solder tail area—gold
Underplating—nickel
Operating Temperatures: -40 to +80°C