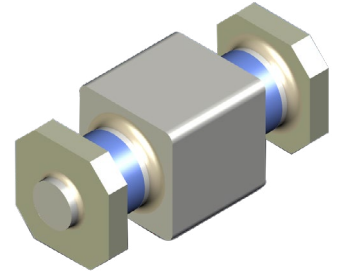


# Surface-Mount EMI Filters >

Offering high-performance electromagnetic interference (EMI) suppression for power-dense applications, Surface-Mount EMI Filters provide high-current capability, exceptional durability and superior insertion loss in a compact package. Surface mounting supports efficient, cost-effective manufacturing for complex systems.



## ADVANTAGES AND FEATURES

### Saves space on the PCB

The compact footprint and surface mounting save space and eliminate the need for bulky through-hole filters on densely populated boards.

### Enables use with high-power applications

Current ratings up to 20.0A and voltage ratings up to 200V DC, along with 700V DC dielectric withstanding voltage, enhance design flexibility.

### Complies with stringent regulations

These EMI filters meet industry electromagnetic compatibility standards and are lead free and RoHS compliant, conforming to global regulations.

Capacitance Values	100 to 4,000 pF
Frequencies	1 MHz to 1 GHz
Circuit Options	C, Pi
Current	10.0 to 20.0A
Voltage	Up to 200V DC
Operating Temperatures	-55 to +125°C

### Delivers exceptional performance

Capacitance up to 100 pF and insertion loss of 70 dB for a wide frequency range from 1 MHz to 1 GHz enable use with a variety of high-performance applications.

### Provides high reliability in challenging conditions

The rugged design and temperature rating of -55 to +125°C helps prevent electrical failures and lengthens the product lifespan for devices subject to harsh environments.

## MARKETS AND APPLICATIONS

### Defense

Military vehicles  
Power supplies  
Radar systems

### Aerospace

Cockpit controls  
First- and business-class seats  
Hydraulic and control systems

### Telecommunications

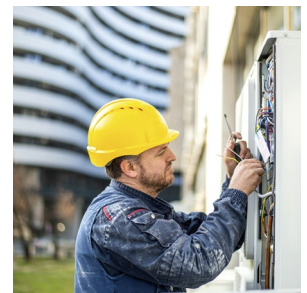
Computer and peripheral equipment  
Digital and switching equipment  
Internet protocol digital subscriber line access multiplexer (IP DSLAMs)  
Microwave, data and signal lines



Cockpit Controls



Military Vehicles



IP DSLAMs

# Surface-Mount EMI Filters

## SPECIFICATIONS

### Reference Information

Packaging: Tape and reel, bulk  
Designed in: Millimeters  
RoHS: Yes

### Electrical

Capacitance: 100 to 4,000 pF  
Filter Circuits: C, Pi  
Current: Up to 10.0A (Pi circuit) or 20.0A (C circuit)  
Voltage: Up to 200V DC  
Dielectric Withstanding Voltage: 700V DC  
Frequency Range: 1 MHz to 1 GHz  
Insertion Loss: Up to 70 dB

### Mechanical

Mounting Method: Surface-mount technology  
Height: 3.00mm  
Length: 8.25mm  
Width: 3.00mm

### Physical

Operating Temperatures: -55 to +125°C