

SideWize High-Voltage Connectors >

Maximize performance by leveraging Molex SideWize High-Voltage Connectors designed for space savings in power distribution applications. These connectors offer easy mating, increase operator safety and meet low-halogen global compliance requirements. Providing high-current and high-voltage connections, SideWize connectors are designed to transfer power across a range of applications, including data center servers, battery energy storage systems and electric vehicle charging stations.

ADVANTAGES AND FEATURES

Eliminates cable bend radius; ideal for space-constrained applications

Right-angle receptacles reduce the bending required to route cables, protecting them in tight spaces and mitigating cable strain that can degrade cable performance and durability.

Provides easy mating and cable assembly dressing

These connectors offer 360° cable assembly rotation during and after mating, reducing stress on solder joints.

Current	80.0A
Voltage	1,500V per UL 4128; 1,000V per UL 1977
Durability	200 mating cycles
Operating Temperatures	-40 to +125°C

Helps prevent risk of electric shock when handling connectors or cable assemblies

The touch-proof and finger-safe feature allows for safety enhancement, protecting operators from harm.

Accelerates system integration and reliability

Color-coded connectors minimize mis-mating the cable assembly with the bulkhead connector.



SideWize High-Voltage Connectors >

MARKETS AND APPLICATIONS

Energy Storage

Power distribution in energy storage system (ESS) racks

Industrial Automation

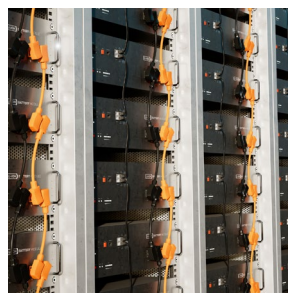
Power distribution in articulated robots

Servers and Storage

Power distribution in power shelves

Telecommunications

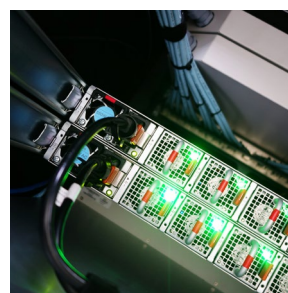
Power distribution in uninterruptible power supply equipment



ESS Racks



Articulated Robots



Power Shelves



Uninterruptible Power
Supply Equipment

SPECIFICATIONS

Reference Information

Packaging: Tray
UL File No.: Pending
CSA File No.: Pending
Use With: Panels and cable assemblies
Designed in: Millimeters

Electrical

Voltage (max.): 1,500V per UL 4128,
1,000V per UL 1977
Current (max.): 80.0A
Contact Resistance (max.): 0.50 milliohms

Mechanical

Mating Force (max.): 40N
Unmating Force with Positive Lock
Engaged (min.): 120N
Unmating Force without Positive Lock
Engaged (min.): 30N
Durability: 200 mating cycles
Mating Audible Click (min.): 7dB

Physical

Receptacle: PBT, copper alloy
Bulkhead Connector: PBT, copper alloy
Plating:
Receptacle socket—gold
Bulkhead pin—silver
RoHS Compliant: Yes
REACH Compliant: Yes
Touch Proof/Finger Safe: Yes, per IEC 60529
Low-Halogen Compliant: Yes
Flammability: UL 94V-0
Operating Temperatures: -40 to +125°C