

Easy-On FFC/FPC Connectors, Slider Series >

As some applications require FFC/FPC cables to bend upwards or downwards after mating, cable disconnections can happen. Easy-On FFC/FPC Connectors, Slider Series provide a dependable solution by securely locking both the slider and cable in place, ensuring reliable performance even under stress. These connectors are available in a range of pitch sizes from 0.50 to 1.00mm, offering flexibility in vertical and right-angle configurations, and are compatible with both gold plating and tin-bismuth plating options.

ADVANTAGES AND FEATURES

Helps secure connection to the FFC/FPC cable

The slider mechanism secures cable locking by placing the cable on the slider and then pushing both the slider and the cable into the connector. This structure helps keep the cable more securely inside the connectors.

Helps simplify automated assembly processes and provides streamlined mating

Sliders allow the robot arm to perform the mating action easily. Robots only have to push out the actuator, insert the cable into the actuator and then push the actuator in.

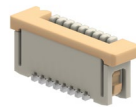
Meets diverse customer requirements

Slider series are available from 0.50 to 1.00mm pitch with both vertical and right-angle versions, which can cover from lower to upper contact.

Contact Resistance (max.)	20 milliohms	
FFC/FPC Thickness	0.30mm	
Height	2.00 to 5.75mm	
Dielectric Withstanding Voltage	1.00mm pitch	500V AC
	0.50mm pitch	250V AC
Durability (max.)	1.00mm pitch	30 cycles
	0.50mm pitch	20 cycles
Operating Temperatures	-40 to +85°C	

1.00mm Pitch Sliders Available in Gold, Tin-Bismuth plating

VERTICAL



52610
Pick-and-place tape version available

RIGHT ANGLE



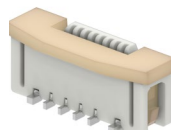
52271
Bottom contact



52207
Top contact

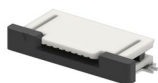
0.50mm Pitch Sliders Available in Gold, Tin-Bismuth plating

VERTICAL

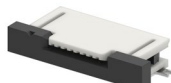


52559
High-barrier package version available

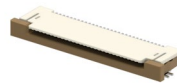
RIGHT ANGLE, TOP CONTACT



52745
4pin to 20 pin

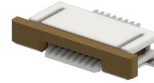


52435
21pin to 30pin

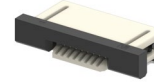


54104
30pin to 50pin

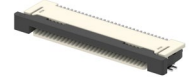
RIGHT ANGLE, BOTTOM CONTACT



52746
4pin to 20 pin



52437
21pin to 30pin



54132
30pin to 50pin

Easy-On FFC/FPC Connectors, Slider Series >

MARKETS AND APPLICATIONS

Appliances

Smart homes
Refrigerators
Microwaves
Ovens
Inductions
Washing machines
Dryers
Printers

Industrial Automation

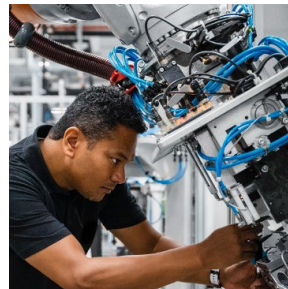
Heavy power construction machines
Robots

Telecommunications

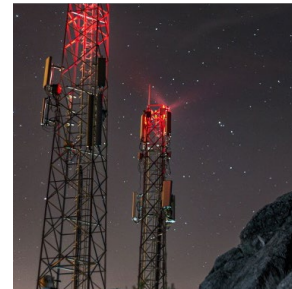
Antennas
Fiber optics
Ethernet switches
Standard harnesses
Routers



Washing Machines



*Heavy Power
Construction Machines*



Antennas

SPECIFICATIONS

Reference Information

Packaging: Embossed tape and reel
Designed in: Millimeters
RoHS: Yes

Electrical

Contact Resistance (max.): 20 milliohms
Dielectric Withstanding Voltage:
1.00mm pitch: 500V AC
0.50mm pitch: 250V AC
Insulation Resistance (min.):
1.00mm pitch: 100 Megohms
0.50mm pitch: 50 Megohms

Physical

Housing: 46 Nylon, UL94V-0
Actuator: PPS, UL94V-0
Contact: Phosphor bronze
Plating:
Contact Area – gold or tin-bismuth
Underplating – nickel
Fitting Nail:
Phosphor Bronze – tin over nickel plating
Operating Temperatures: from -40 to 85°C
Height: 2.00 to 5.75mm
Width: 4.50 to 7.60mm

Mechanical

FFC/FPC Thickness: 0.30mm
Durability (max.):
1.00mm pitch: 30 cycles
0.50mm pitch: 20 cycles

Easy-On FFC/FPC Connectors, Slider Series

ORDERING INFORMATION

Part No.	Pitch (mm)	Orientation	Rated Current (A)/ Rated Voltage (V)	Circuit count	Plating	Temperature	Special Feature	
52610-xx75	1.00	Vertical	1/125	6 to 30	Tin-Bismuth	-40 to +85°C	Pick-and-place tape version	
52610-xx71				6 to 30	Tin-Bismuth		Embossed Carrier Tape	
52610-xx72				6 to 30	Gold			
52207-xx60		Right Angle		3 to 30	Gold			
52207-xx85				3 to 34	Tin-Bismuth			
52271-xx69		0.50/50	4 to 30	Gold				
52271-xx79			4 to 30	Tin-Bismuth				
52745-xx96	4 to 20		Tin-Bismuth					
52745-xx97	4 to 20		Gold					
52435-xx71	21 to 30		Gold					
52435-xx72	21 to 30		Tin-Bismuth					
54132-xx62	30 to 50		Gold					
54132-xx97	30 to 50		Tin-Bismuth					
52746-xx70	4 to 20		Tin-Bismuth					
52746-xx71	4 to 20		Gold					
52437-xx71	21 to 30		Gold					
52437-xx72	21 to 30		Tin-Bismuth					
54104-xx31	30 to 50		Gold					
54104-xx96	30 to 50		Tin-Bismuth					
52559-xx52	Vertical		6 to 40	Gold	High Barrier Packaging			
52559-xx53			8 to 33	Gold	Embossed Carrier Tape			
52559-xx70			8 to 33	Tin-Bismuth	High Barrier Packaging			
52559-xx72			6 to 40	Tin-Bismuth	Embossed Carrier Tape			

Replace xx with circuit size

www.molex.com