

# EXTreme PowerEdge Plus Card Edge Connectors >

As data centers consume massive amounts of energy, engineers are tasked with finding ways to enhance energy efficiency without compromising performance. EXTreme PowerEdge Plus Card Edge Connectors revolutionize data center power management by affording high current density and low-profile housing. This high-power card edge connector also meets the Modular-Common Redundant Power Supply (M-CRPS) mechanical standards and exceeds electrical requirements, offering customers extra performance margins for their designs. Experience superior efficiency and reliability with this state-of-the-art card edge connector technology.

## ADVANTAGES AND FEATURES

### Provides lower contact resistance, lower power loss and higher reliability

Each power circuit has eight independent points of contact (mating points to the PCB) ensuring multiple paths for current flow. This decreases overall contact resistance, thereby reducing energy inefficiencies and heat generation.

### Meets M-CRPS mechanical requirements and exceed the electrical requirements

These connectors feature a 7.62mm pitch for power circuits and a 2.54mm pitch for signal circuits, ensuring compliance with M-CRPS standards to optimize efficiency and minimize the risk of downtime caused by power failures.

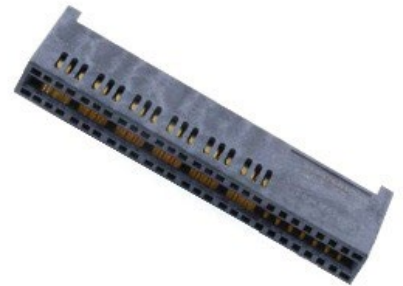
Current	47.0A/circuit for 12-circuit connector
Voltage	Power-100V; Signal-60V
Durability	200 mating cycles
Operating Temperatures	-55 to +105°C

### Higher current density than any edgecard connector in the market

These connectors use an innovative dual-layer terminal design delivering greater than 3,300W at 12V. Customers benefit by not having to compromise on size or efficiency.

### Avoids overheating system

The low-profile housing allows for improved airflow enhancing system cooling and helping prevent thermal damage.



## MARKETS AND APPLICATIONS

### Data center

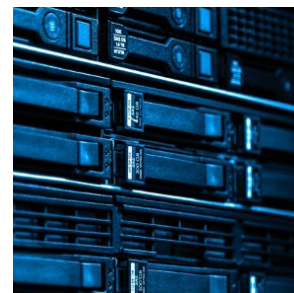
Power shelves  
Power supplies

### Telecommunications/Networking

Servers  
Storage devices  
Switches



Power Shelves



Servers

# EXTreme PowerEdge Plus Card Edge Connectors >

## SPECIFICATIONS

### Reference Information

Packaging: Tape and reel  
UL File Number: E29179  
CSA File Number: 019980\_A\_000  
Designed in: millimeters  
RoHs Compliant: Yes  
Low Halogen: Yes  
PFAS Compliant: Yes

### Physical

Housing: LCP, UL94 V0  
Terminals: High-performance copper alloy  
Plating: Contact area gold, tails tin  
Mating PCB Thickness: 1.57mm  
Operating Temperature: -55 to +105°C

### Electrical

Voltage: Power—100V; Signal—60V  
Current: Power—47.0A/circuit  
(12-power circuit connector)  
Contact Resistance (max.): 0.6 milliohm

### Mechanical

Mate Force of a 12-Power and 14-signal  
circuit connector (max.): 140N  
Unmate Force of a 12-Power and 14-signal  
circuit connector(min.): 10N  
Durability: 200 mating cycles

## ORDERING INFORMATION

Product Family	Series Number	Orientation	Power Circuits	Signal Circuits	Mounting Styles
EXTreme PowerEdge Plus Card Edge Connectors	<u>219476-0000</u>	Right Angle	12	14	soldertail
	<u>219476-0100</u>				