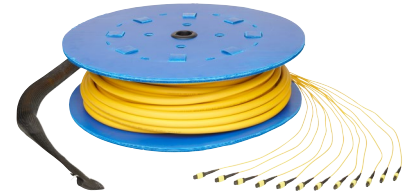


OptoTrunk Cables >

Optimizing space, improving performance and supporting expansion in data center applications, OptoTrunk Cables support future-proofed optical network design and provide more efficient connectivity than multiple single cables that have separate connectors.



ADVANTAGES AND FEATURES

Streamlines cable management and system architecture

Trunk cables consolidate multiple cables with numerous connectors and field terminations into a single cable, easing design challenges for high-density connectivity. Reducing the number of interconnects also improves insertion loss and return loss performance.

Accelerates installation and maintenance operations

Pre-terminated trunk cables permit quick and hassle-free field installation. Available pulling eyes allow easy installation through compact cable troughs overhead or beneath the floor.

Improves design flexibility

A variety of connector types are available, including cross-connector interconnect solutions.

| | |
|------------------------|--|
| Connector Options | LC, MTP/MPO, MMC, SN-MT, CS, MDC |
| Cable Lengths | 10.0 to 100.0m (longer available upon request) |
| Mode | Single mode or multi-mode |
| Fiber Types | SM, OM3, OM4 |
| Fiber Count | 72F, 144F |
| Fiber Termination | Simplex, duplex, 8F, 12F, 16F, 24F |
| Operating Temperatures | -18 to +70°C |

Enables optical connectivity in a wide range of environments

The plenum-rated (optical fiber non-conductive plenum, or OFNP) cables have low-smoke and low-flame characteristics and are temperature-tolerant, enabling use in high-heat environments or plenum installations.

Simplifies data center upgrades

The 72-fiber and 144-fiber options help upgrade data center capacity more quickly and easily

APPLICATIONS

Networking

Backbone cables
Transition cables
Pre-terminated assemblies

Servers and Storage

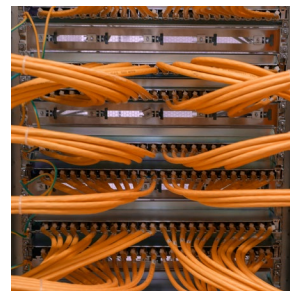
Communication wiring
Switching stations
Routing stations

Telecommunications

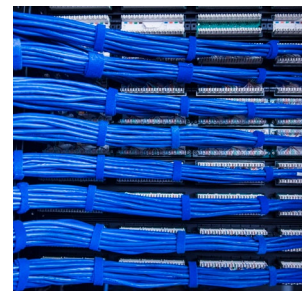
Distribution points
Backbone cables
High-security communication systems
Online learning networks



Transition Cables



Switching Stations



Backbone Cables

OptoTrunk Cables

PRELIMINARY SPECIFICATIONS

Reference Information

| | |
|--|---|
| Packaging: Reel | Contact Face: Angled physical contact (APC) or ultra physical contact (UPC) |
| Standards: GR-326, TIA-568, IEC Attenuation Grade B | Connector Types: MTP/MPO (12F, 16F) |
| Fiber Count: 72F, 144F | LC (simplex, duplex) |
| Cable: Plenum (OFNP) | MMC (16F, 24F) |
| Jacket Ratings: Low-smoke zero halogen (LSZH), Plenum (OFNP) | SN-MT (8F, 16F) |
| Fiber Types: Single Mode—SM | CS (simplex, duplex) |
| Multi-Mode—OM3, OM4 | MDC (duplex) |
| | Designed in: Millimeters |
| | RoHS: Yes |
| | Halogen Free: Yes |

Physical

| |
|--|
| Jacket Colors: Single Mode (OS2)—Yellow |
| Multi-Mode (OM3/OM4)—Aqua |
| Boot Type: Straight |
| Cable Length: 10.0 to 100.0m (longer lengths available upon request) |
| Fiber Core Size: Single mode—9µm |
| Multi-mode—125µm |
| Fiber Cladding Size: Single mode—50µm |
| Multi-mode—125µm |
| Single-Ended: No |
| Split Sleeve Material: Zirconia ceramic |
| Operating Temperatures: -18 to +70°C |
| Storage Temperatures: -40 to +70°C |