

RJ45 In-Line Coupler

Connecting Ethernet cables can often be challenging, particularly when rerouting or replacing cables isn't an option. RJ45 in-line coupler address these issues by providing a reliable, standardized, and cost-effective solution. It allows for convenient cable extensions or device swapping, while ensuring compatibility and continuity within the network setup.



ADVANTAGES AND FEATURES

Enhances suitability for use in various enclosures and equipment housings

Panel mounting provides enhanced accessibility and reliability by ensuring a secure and organized connection point in various enclosures and equipment housings.

Allows easy swapping out of cables or devices without rewiring

The flexibility of the RJ45 In-Line Coupler streamlines the process of swapping cables or devices by providing a simple, plug-and-play solution. This enhances ease of maintenance, reduces downtime and allows for adaptable network configurations without the need for extensive rewiring.

Current (max.)	1.0A
Voltage (max.)	100V DC
Contact Resistance	20 milliohms
Durability	750 cycles
Plating	Gold-Nickel
Operating Temperatures	0 to 70°C

Ensures good electrical conductivity and corrosion resistance

The gold-over-nickel finish ensures reliable performance and longevity of the coupler. Gold provides superior conductivity and corrosion resistance, while the nickel underlayer enhances adhesion and provides additional protection.

Enhances versatility and ease of use

RJ45 In-Line Coupler mates with modular plugs regardless of their orientation, allowing connections that result in a more user-friendly experience and greater flexibility in various network setups.

MARKETS AND APPLICATIONS

Telecommunications

Patch panels
Routers

Networking

Network switches
Data centers

Industrial Automation

Control systems
Sensor networks

Wireless Infrastructure

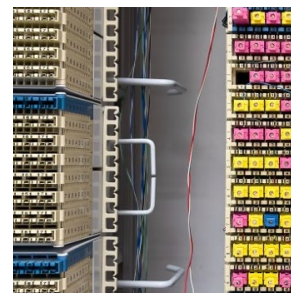
AV installations

Servers & Storage

Servers
Hubs



Routers



Network Switches



Control Systems

RJ45 In-Line Coupler >

SPECIFICATIONS

Reference Information

Packaging: Tray
UL File No.: E107635
Mates with: IEC 60603-7 / TIA-1096-A
RoHS: Compliant
Low Halogen: Yes

Mechanical

Durability: 750 cycles
Vibration Test: Discontinuities 10 μ s maximum

Electrical

Voltage (max.): 100V DC
Current (max.): 1.0A
Contact Resistance: 20 milliohms
Dielectric strength:
Between terminals: 1000 V DC OR AC peak
Between terminals and shielding case
(if present): 1500 V DC OR AC peak

Physical

Housing: PC
Contact: Copper Alloy
Plating:
Contact Area — Gold
Underplating — Nickel
Operating Temperature: 0 to 70°C

ORDERING INFORMATION

Part Number	Ethernet Speed	Positons/Loaded Contacts	Packaging
2244610001	Cat3	8/8	Tray

www.molex.com