

# OneBlade 1.00mm-Pitch Wire-to-Board Connector System >

The modular OneBlade 1.00mm-Pitch Wire-to-Board Connector System with friction lock and spacious pick-and-place area combines design simplicity with speed and ease of assembly.



OneBlade 1.00mm-Pitch Wire-to-Board Connector System

## ADVANTAGES AND FEATURES

### Provides better mating retention of header and harness

Connector has friction lock for stable, reliable connections.

### Offers secure and stable electrical contact

A dual-point contact design helps minimize the risk of movement and separation.

### Reduces the number of loose parts serving each function

Nails and terminals are integrated in a single part.

### Simplifies parts inventory management

Single connector housing is used interchangeably as a vertical- or right-angle header.

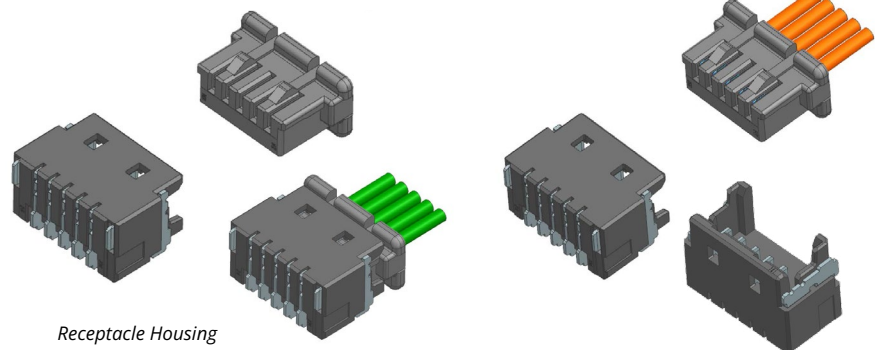
Current	2.5A
Voltage	100V
Wire Gauges	28, 30, 32 AWG
Operating Temperatures	-40 to +105°C

### Offers design flexibility and efficiency

Singular header design can be used in vertical- or right-angle mating and mounting orientations.

### Serves as both fitting nail and solder tail in both vertical and right-angle version connectors

The connectors have a dual-function solder tab.



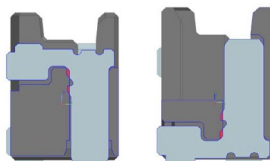
Receptacle Housing

Header Contact

Solder tab configured as a fitting nail in right-angle connector and solder tail in vertical version

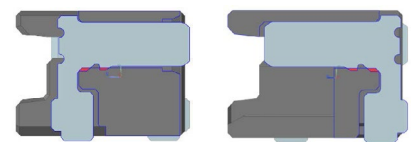
Vertical Type

Right-Angle Type



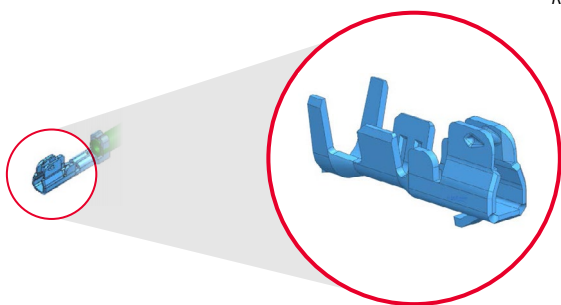
Fitting Nail

Solder Tail



Fitting Nail

Solder Tail



# OneBlade 1.00mm-Pitch Wire-to-Board Connector System >

## MARKETS AND APPLICATIONS

### Home Appliances

Washing machines  
Refrigerators  
Air conditioners  
Vacuum cleaners

### Consumer

Desktop computers

### Data Center

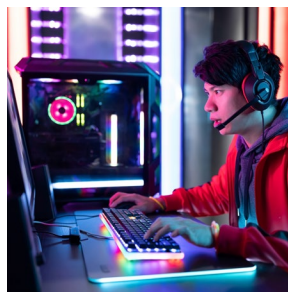
Servers  
Routers

### Connected Home

Smart speakers



Home Appliance



Desktop PC



Smart Speaker

## SPECIFICATIONS

### Reference Information

Packaging:

Header: embossed tape

Housing: bag

Terminal: reel

Designed in: millimeters

RoHS: yes

### Electrical

Voltage (max.): 100V

Current (max.): 2.5A (2 circuits with 28AWG)

Contact resistance: 20 milliohms (max.)

AWG: 28, 30, 32

UL E29179

### Physical

Header Housing: PA

Housing: PA

Terminal plating: Tin (Sn)

Operating Temperature -40 to 105°C

## ORDERING INFORMATION

Vertical Header	Right-Angle Receptacle	Housing	Circuits	Plating	Terminal	Wire Gauge
<a href="#">214094</a>	<a href="#">214097</a>	<a href="#">214092</a>	2 to 8	Tin	<a href="#">2140935000</a>	28 to 30 AWG
					<a href="#">2140935100</a>	30 to 32 AWG

[www.molex.com](http://www.molex.com)