

# Mini-Fit Max Connector >

The Mini-Fit Max Wire-to-Board Connector delivers 20.5A of current in a compact form factor and provides a simplified and diverse array of mid-range power solutions. Available in both single- and dual-row configurations, these connectors offer versatile design options and durable features making them ideal for both power and signal applications.

## ADVANTAGES AND FEATURES

### Reduces the cost of materials and labor, and allows customers to meet the European standard for electrical requirements

The 94/V-O Glow-wire combination resin makes the connector V0 and glow-wire compatible in a single part number per component.

### Saves PCB space

These connectors offer a slim profile design for space savings.

### Helps prevent mis-mating; different from the standard Mini-Fit connector

Keying and polarization options allow for easy identification and accurate mating.

### Delivers more power per linear inch and square millimeter than other mid-range power connectors

These connectors are end-to-end stackable.

### Offers redundant, secondary current paths for long-term performance and reliability

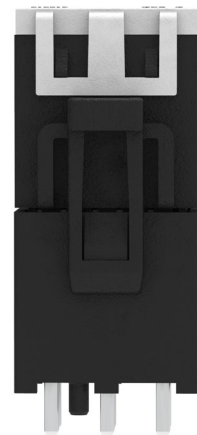
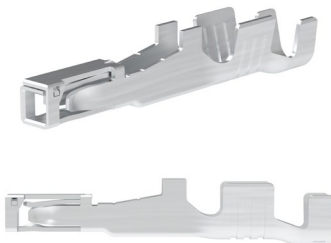
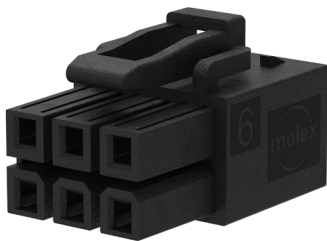
Micro-Fit Max Connectors have four independent points of contact.

### Helps ensure that terminals are fully seated in their housing to reduce terminal backout

TPA stop provides security and stability for terminals.

### Provides safety for the terminals during packing and assembly insertion

The tangless design addresses terminal security inside the receptacle for protection and ease of assembly.



# Mini-Fit Max Connector >

## MARKETS AND APPLICATIONS

### Telecommunications/Networking

Switches  
Servers  
Power supplies and distribution equipment  
Network towers

### Industrial

Commercial equipment  
Commercial lighting  
Industrial HVAC systems

### Home Appliance

Heaters and air conditioners  
Washers and dryers



*Servers*



*Industrial HVAC Systems*



*Washers and Dryers*

## SPECIFICATIONS

### Reference Information

Packaging: Reference Molex.com Spec. Part Number  
UL File No.: Reference the Product Specification  
CSA File No.: Reference the Product Specification  
Mates With:  
Series: 212514 Series: 212520  
Series: 212515 Series: 212514  
Series: 212516 Series: 212514  
Use With: See "Mates With" above  
Terminal Used: 212515  
Designed In: Millimeters  
RoHS: Yes  
Halogen Free: Yes  
Glow-Wire Capable: Yes

### Electrical

Voltage (max.): 600V  
Current (max.): 20.5A  
Contact Resistance: 2 mΩ  
Dielectric Withstanding Voltage: No Breakdown  
Current leakage: <5mA  
Insulation Resistance: 1,000 MΩ minimum

### Mechanical

Contact Retention to Housing: 40.0N  
Mating Force: 6.0N  
Unmating Force: 4.0N  
Durability (min.): 20 cycles

### Physical

Housing: UL 94V-0/Glow Wire  
Pitch: 4.20mm  
Contact: Tin (Sn)  
Plating:  
Contact Area — Tin (Sn)  
Solder Tail Area — Tin (Sn)  
Underplating — Nickel (Ni)  
PCB Thickness: Multiple options  
Operating Temperature: -40 to +105°C

[www.molex.com](http://www.molex.com)