

Easy-On FFC/FPC FS19 Tin-Bismuth Series >

Various applications require connectors to accommodate different types of cables and a wide variety of circuit sizes. Engineered to integrate seamlessly with a variety of cable types, the Easy-On FFC/FPC FS19 series with Tin-Bismuth plating offers an extensive range of circuit counts to meet the diverse needs of several applications. The FS19 series features a generously sized actuator that ensures effortless operation, making it the perfect choice for enhancing productivity and reducing strain on operators.



ADVANTAGES AND FEATURES

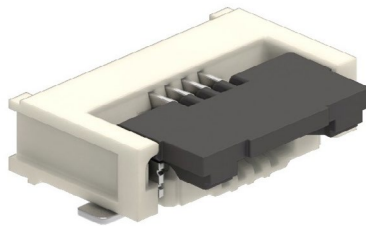
Facilitates Easy Operation

Easy-On FFC/FPC FS19 Tin-Bismuth Connectors have a large actuator, which provides ample space for the finger to open or close the actuator, allowing easier operation.

Enhances Design Flexibility

The connectors are designed to seamlessly mate with both eared and non-eared cables. Along with an extensive circuit range, these connectors effortlessly cater to a wide array of customer needs, ensuring maximum versatility and satisfaction.

Current (max.)	1.0A
Voltage (max.)	125V
Plating	Tin-Bismuth
Mated Height	1.90mm
Durability (max.)	20 cycles
Operating Temperatures	-40 to +85°C



Large Actuator



Latch-Type FPC

MARKETS AND APPLICATIONS

Industrial automation

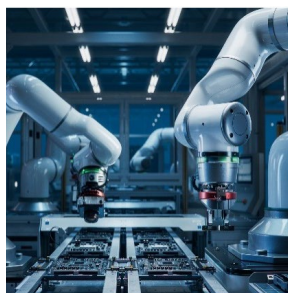
Industrial controls
Robots

Consumers

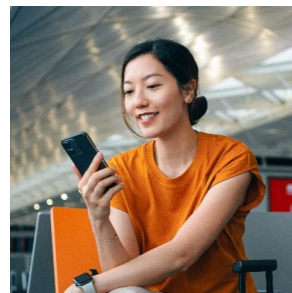
Smartphones with multimedia/computing/
connection functionality
Gaming devices

Appliances

LCD devices
Washing machines
Dryers
Dishwashers
Refrigerators
Microwaves
Ovens
Induction stoves



Robots



Smartphones



Washing Machines

Easy-On FFC/FPC FS19 Tin-Bismuth Series

SPECIFICATIONS

Easy-On FFC/FPC FS19 Tin-Bismuth Series (505278)

Reference Information

Packaging: Embossed tape and reel
Use with: FFC/FPC
Designed in: Millimeters
RoHS: Yes

Electrical

Voltage (max.): 50V
Current (max.): 0.5A
Contact Resistance (max.): 40 milliohms
Dielectric Withstanding Voltage: 125V AC
Insulation Resistance (min.): 50 Megohms

Mechanical

FFC/FPC Thickness: 0.30mm
Durability (max.): 20 cycles

Physical

Housing: LCP, UL 94 V-0, Beige
Actuator: PA, UL 94 V-0, Black
Plating:
Contact Area: Tin-Bismuth
Underplating: Nickel
Fitting Nail Area: Tin
Terminal and fitting nail material:
Phosphor Bronze
PCB Mounting: Surface mount
Operating Temperatures: -40 to +85°C

Easy-On FFC/FPC FS19 Tin-Bismuth Series (200529)

Reference Information

Packaging: Embossed tape and reel
Use with: FFC/FPC
Designed in: Millimeters
RoHS: Yes

Electrical

Voltage (max.): 125V
Current (max.): 1.0A
Contact Resistance (max.): 40 milliohms
Dielectric Withstanding Voltage: 500V AC
Insulation Resistance (min.): 50 Megohms

Mechanical

FFC/FPC Thickness: 0.30mm
Durability (max.): 20 cycles

Physical

Housing: LCP, UL 94 V-0, Beige
Actuator: PA, UL 94 V-0, Black
Plating:
Contact Area: Tin-Bismuth
Underplating: Nickel
Fitting Nail Area: Tin
Terminal and fitting nail material:
Phosphor Bronze
PCB Mounting: Surface mount
Operating Temperatures: -40 to +85°C

Easy-On FFC/FPC FS19 Tin-Bismuth Series

ORDERING INFORMATION

Series No.	Pitch (mm)	Orientation	Contact Position	Circuits	Temperature	Plating
52745-**97	0.50	Right-Angle	Top	4 to 20	40 to +85°C	Gold
52745-**96			Top	4 to 20		Tin-Bismuth
52746-**71			Bottom	4 to 20		Gold
52746-**70			Bottom	4 to 20		Tin-Bismuth
52435-**71			Top	21 to 30		Gold
52435-**72			Top	21 to 30		Tin-Bismuth
52437-**71			Bottom	21 to 30		Gold
52437-**72			Bottom	21 to 30		Tin-Bismuth
54104-**31			Top	30 to 50		Gold
54104-**96			Top	30 to 50		Tin-Bismuth
54132-**62			Bottom	30 to 50		Gold
54132-**97			Bottom	30 to 50		Tin-Bismuth
52559-**52	0.50	Vertical	Vertical	6 to 42		Gold
52559-**72						Tin-Bismuth
52207-**60	1.00	Right-Angle	Top	3 to 34		Gold
52207-**85			Top	3 to 34		Tin-Bismuth
52271-**79			Bottom	4 to 30		Tin-Bismuth
52271-**69			Bottom	4 to 30		Gold
52610-**72	1.00	Vertical	Vertical	4 to 30		Gold
52610-**71						Tin-Bismuth
505278**70	0.50		Bottom	4 to 50		Tin-Bismuth
200529-0**1	1.00		Bottom	4 to 22		

Replace ** with circuit size