

Optical EMI Shielding Adapters >

Delivering streamlined behind-panel routings for multiple optical interfaces, Molex Optical Electro-Magnetic Interference (EMI) Shielding Adapters with available eye safety shutters are ideal for data communications and networking applications that require high I/O density.



ADVANTAGES AND FEATURES

Provides flexibility in fiber routing

with options including MPO (also known as MTP®) to MPO, MPO to MT, MPO to HBMT, and LC to LC

Provides electro-magnetic interference (EMI) protection

using metal die-cast housings

Accommodates single-mode (SM) and multi-mode (MM) performance

offering ceramic or phosphor bronze alignment sleeves where applicable

Facilitates upgrades to 16-fiber data center architecture

with 16- and 32-fiber MPO adapters

Provides dust protection and reduces EMI

with available built-in safety shutters for when no connector is installed

Enhances safety for operators

by offering automatic internal shutters that help customers achieve laser safety without requiring extra hands or specialized tooling to mate connectors

Adapter Options	MPO to MPO, MT or HBMT LC to LC
Fiber Count	MPO: 12, 16, 24, 32, 48 LC: 2, 4, 6, 8, 16
Number of Ports	MPO: 1, 2, 4, 6, 8, 15 LC: 2, 4, 6, 8, 16
Laser Shield Shutters	Automatic internal, external or none
Operating Temperatures	-40 to +85°C

Enables greater design flexibility

with single- and multi-port adapters that accept one or four connectors

Eases space constraints on the panel

by offering multi-port options to increase the number of ports within an envelope

Improves functionality and minimizes system design requirements

by permitting increased fiber counts within existing footprints using a high-density port design

Offers mounting flexibility

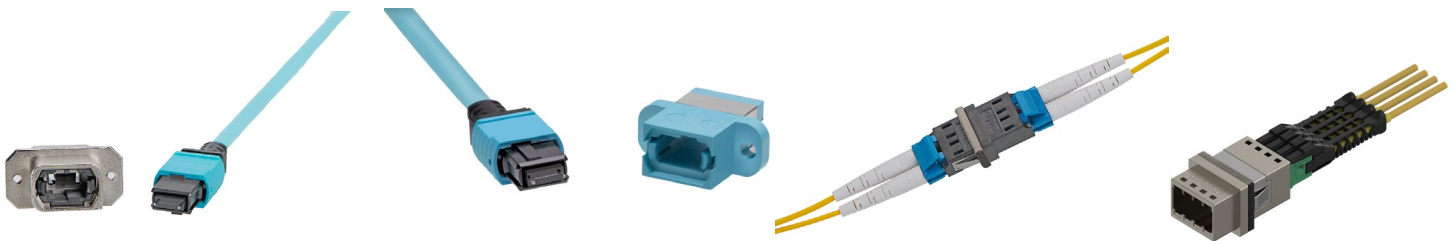
with screw- and snap-mount styles available

Improves airflow and simplifies assembly operations

by providing horizontally aligned ganged connectors that don't require troublesome twists or bends

Reduces EMI at the mounting surface

with an EMI gasket to provide a seal between the adapter and the mounting surface



Optical EMI Shielding Adapters >

APPLICATIONS

Telecommunications

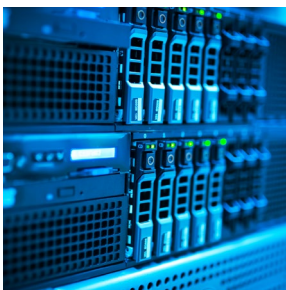
Core routers
Servers
Switches
Hubs

Industrial Automation

Production line equipment
Test equipment
Harsh environment applications

Server and Storage

Co-packaged optics
Data center equipment
Gigabit Ethernet testing equipment



Servers



Production Line Equipment



Co-Packaged Optics

SPECIFICATIONS

Reference Information

Packaging: MPO – tray; LC – bag
Mates With: MPO, MT, HBMT
Use With: Optical cable assemblies and
FlexPlane optical circuitry
Designed in: Millimeters
RoHS: Yes
Halogen Free: Yes

Mechanical

Durability (min.):
MPO – 50 mating cycles
LC – 200 mating cycles

Physical

Housing: Metal (Zinc) for EMI shielding versions
Plating: Electro-less Nickel
Operating Temperatures: -40 to +85°C

www.molex.com